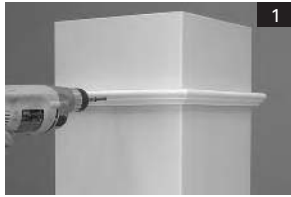


square fiberglass column installation

2



1. Locate and mark the correct placement of the astragal by measuring down from the top of the shaft (4" for an 8" shaft, 4-5/8" for a 10" shaft and 5" for a 12" shaft). Use a square to mark a line at this measurement on each side of the shaft. Slide the astragal over the top of the shaft until the bottom of the astragal reaches the lines. Pre-drill through the astragal and shaft for rust resistant screws and secure the astragal into place. Use automotive body filler to cover the screw heads and apply a bead of paintable silicone sealant at the joint between the shaft and astragal.

**STORAGE**

✓ Fiberglass columns must be stored in an area that is cool, dry and out of direct sunlight.



2. Measure the overall opening height. Raise the soffit slightly with a sturdy brace to allow positioning of the column during installation.



3. Slide the base onto the shaft and hold with tape. Trim with a circular saw equipped with an abrasive cut-off blade. Make final adjustments with a belt sander. It is very important that the load is evenly distributed around the shaft perimeter.



4. Slide the capital over the top of the shaft allowing it to rest on the astragal.



5. Drop a plumb bob from the center of the soffit to determine the column's center point on the floor. Mark this point for reference to align the shaft in the proper position.



6. Move the column into place being certain the load is centered over the entire perimeter of the square shaft. Remove any bracing and allow the load to bear on the square shaft. When properly in position:  
a) The top and bottom of the shaft will fit evenly with the adjoining surface. There will not be any voids or distortions between the shaft and the adjoining surface.  
b) The load will rest evenly around the perimeter of the column shaft.



**NOTE: Do not continue unless both (a) and (b) are achieved.**



7. Obtain corner brackets from a hardware supplier. With the shaft in place, mark and pre-drill the shaft, floor and soffit to receive screws to install the corner brackets. Install screws to secure the corner brackets to the top of the shaft and the soffit and to the bottom of the shaft and the floor.  
**NOTE: Self-tapping masonry fasteners should be used in concrete floors.**



8. Slide the capital into place and pre-drill through the capital and shaft for screws or toggle bolts. Install rust resistant screws to secure the capital into place. Use automotive body filler to cover the screw heads and apply a bead of paintable silicone sealant at the joint between the shaft and capital.



9. Loosen the tape, slide the base down the shaft, and pre-drill the base and shaft. Install rust resistant screws to secure the base into place. Use automotive body filler to cover the screw heads and apply a bead of paintable silicone sealant at the joint between the shaft and base.

**SPECIAL NOTE**

If building codes specify uplift protection, additional hardware is required. Crown recommends Simpson Strong-Tie anchor tie down hardware. Simpson Strong-Tie's toll free number is 800-999-5099. Follow the manufacturer's instructions when installing the hardware.

**FINISHING INSTRUCTIONS**

1. To prevent damage from ultraviolet rays, use quality, exterior grade acrylic latex coatings. **NOTE:** Acrylic latex products have superior adhesion over plain latex finishes. Coat the entire column shaft, capital, and base. A minimum of one (1) primer coat and one (1) finish coat should be applied prior to installation.
2. Do not paint using dark colors (dark colors are considered any color that falls within the L values of 56 to 0). L is a measure of the lightness of an object, and ranges from 0 (black) to 100 (white).
3. Paints, while usually dry to the touch in hours, may take several days to thoroughly cure. The column should be protected from contact during this curing process.
4. Always follow the paint manufacturer's instructions.