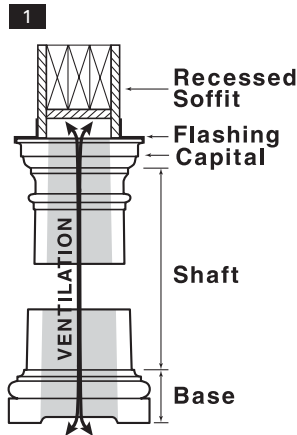


**STORAGE**

✓ Store all wood columns in an area that is cool, dry and well ventilated.



1. Adequate ventilation is a necessity in the installation of wood columns. It must be provided for at the top of the column by a recessed soffit and at the bottom by the precut openings in the plinth.



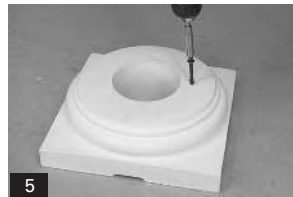
2. All columns, capitals and bases must be primed with one (1) coat of exterior oil-based primer and then painted with one (1) coat of exterior oil-based paint prior to installation. All surfaces, including the top and bottom of the column and all surfaces of the capital and base must be coated. Apply the coatings with a brush to best protect the column from moisture. Follow the paint manufacturer's instructions for best results.



3. Drop a plumb bob from the center of the soffit to determine the column's center point on the floor. Mark this point for reference to align the shaft in the proper position.



4. Level the plinth to the floor, making sure the ventilation area is maintained. The ventilation area may need to be enlarged.



5. Polyurethane bases are secured to the floor using rust resistant screws or masonry fasteners.



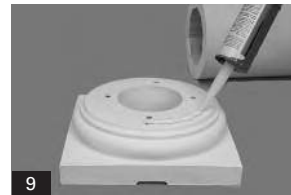
6. Measure the overall opening height. Raise the soffit slightly with a sturdy brace to allow positioning of the column during installation.



7. Subtract the height of the capital and base. If trimming is necessary, trim from the base of the shaft. The load must be evenly distributed around the entire column circumference.



8. The end grain at the bottom of the shaft must be sealed and painted to protect the column from moisture.



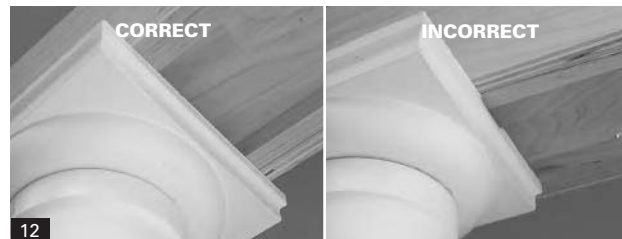
9. Apply a bead of paintable silicone sealant around the top perimeter of the base and place the shaft on top of the base.



10. Pre-drill and countersink holes at an angle through the shaft into the base. Install rust resistant screws to secure the shaft to the base. Remove any excess paintable silicone sealant.



11. Pre-drill through the soffit into the capital and fasten the capital to the soffit with rust resistant screws. Apply a bead of paintable silicone sealant at the joint between the capital and the soffit.



12. Be sure the shaft is centered under the capital. Remove any bracing and allow the load to bear on the column shaft. When properly in position:  
(a) The top and bottom of the column shaft will fit evenly with the adjoining surface. There will not be any voids or distortions between the shaft and the adjoining surface.  
(b) The load will rest evenly around the entire circumference of the column shaft.

**NOTE: Do not finish the installation unless both (a) & (b) are achieved.**

**SPECIAL NOTE**

If building codes specify uplift protection, additional hardware is required. Crown recommends Simpson Strong-Tie anchor tie down hardware. Simpson Strong-Tie's toll free number is 800-999-5099. Follow the manufacturer's instructions when installing the hardware.

**round stock wood column installation (continued)**

5



13

13. Pre-drill and countersink holes at an angle through the shaft into the capital. Install rust resistant screws to secure the shaft to the capital.



14

14. All joints must be sealed with paintable silicone sealant.



15

15. All countersunk screw holes should be filled with wood filler and sanded.



16

16. Finish the column by applying a final coat of exterior oil-based paint.